

Washroom



Products and Systems

NEVER UNDERESTIMATE THE IMPACT OF YOU WASHROOMS



Kimberly-Clark Professional

Kimberly-Clark is a \$15 Billion Global Consumer and Professional Products Company employing over 64,000 people worldwide. Our Tissue, Personal Care and Healthcare products are manufactured in 42 countries and sold in more than 150. We are home to some of the world's most trusted and recognised brands, including KLEENEX®, SCOTT®, WYPALL®, HUGGIES® and KOTEX®. Nearly one-fourth of the world's population use Kimberly-Clark products each year. We have been one of Fortune Magazine's "Most Admired" corporations since 1983 and were recently named to its list of "100 Best Companies to Work For in America".

Recognising the needs of the Indian market and backed with years of research and learning, Kimberly-Clark Professional products were launched targeting Institutional customers during 1995. Since then, Kimberly-Clark has been doing pioneering work with leading Indian customers like Airlines, Prestigious Hotel Chains, Food Service Outlets, Corporate Offices, Entertainment Centres and Health Care Facilities.

Kimberly-Clark Professional is reputed in India for:

Kimberly-Clark Hygiene Products Private Limited is a wholly owned subsidiary of Kimberly-Clark Corporation.

- *National presence of extensive distribution channel partners covering the length and width of the country.*
- *Dynamic team with consultative approach to customer problem solving and providing innovative services such as on-site need analysis & cost-in-use analysis.*
- *Prompt deliveries and reliable after sales service - on time, complete and consistent quality.*
- *On line Customer Care Service and Toll-Free Customer Care Line to provide ready information and assistance.*

Over the past years we have pioneered in India innovative products such as the Folded Paper Towel System, the Skin Care System, the Jumbo Roll Tissue System. We recently revolutionised the conventional Roll Bathroom Tissue category with the Hygienic Bathroom Tissue System and the Folded Napkin System category with the Pop-Up Napkin System.

*We would be delighted to assist you maintain and improve the image of your washrooms, increase cleanliness, improve efficiency & hygiene standards, reduce waste and save time & money - **all while delivering exceptional performance and better value for money!***

CONTENT

● <u>Skin Care System</u>	4
● <u>Folded Paper Towel System</u>	8
● <u>Hygienic Bathroom Tissue (HBT) System</u>	12
● <u>Personal Seat Cover System</u>	16
● <u>Jumbo Roll Tissue (JRT) System</u>	18
● <u>Kimberly-Clark Small Roll Tissue</u>	20
● <u>Kimberly-Clark Facial Tissue</u>	21
● <u>Kimberly-Clark Utility Kitchen Roll</u>	22
● <u>Kimberly-Clark Pop-Up Napkin System</u>	23
● <u>Kimberly-Clark Quarter-Fold Napkins</u>	26
● <u>KiWINDOWS[®] MICROMIST 3000</u>	27



SKIN CARE SYSTEM



Highest standard of Hygiene and Presentation

SKIN CARE SYSTEM

Skin Care System provides you a cost effective solution to change your washrooms from a source of discomfort to a comfort zone.

IN-SIGHT* Series-i Skin Care System



IN-SIGHT* Series-I Skin Care Dispenser
500 ml.



IN-SIGHT* Series-I Skin Care Dispenser
800 ml.

WINDOWS* Series-i Skin Care System

The New IN-SIGHT* Series-i range of Skin Care Dispenser gives you a graceful new look. It is curved and contemporary, creating the best impression for your restrooms.



WINDOW® IN-SIGHT* Series-I
Skin Care Dispenser
500 ml.



WINDOW® IN-SIGHT* Series-i
Skin Care Dispenser
800 ml.

Also Available WINDOWS® Mini Skin Care System



WINDOW® Mini-500
A Skin Care System designed especial for tight spaces and low traffic washrooms. Small enough to fit where you want it, yet big enough to hold 500ml of soap.

WINDOW® Series Mini-500
Skin Care Dispenser
500 ml.



DISPENSER

Mini Dispenser

- Dispensers do not rust & are easy to clean.
- Easy to mount on wall or tiles with screws or adhesive tape.



- Simple, push lever assembly system eliminates chances of break down and damage.
- The dispenser does not clog, leak or drip.



- A gentle 'push' of the lever dispenses a fixed, pre-measured quantity of soap, eliminating wastage and overuse.



Soap Refill

- The revolutionary 'pump & pouch' dispensing system prevents the unused soap from contamination.
- Every soap refill is packed in a one time use vacuum pouch, delivering drip-free, clog-free and leak-proof performance.
- Use and throw soap pouches reduces maintenance time.
- The pH balanced soap is specially formulated to clean, moisten and soften skin.
- The thick, luxurious soap does not run off your hands like conventional liquid soaps, hence controlling wastage & overuse.



SOAP REFILL

Soap Refill Options

The WINDOWS* Mini-500 Skin Care System and WINDOWS* Series-i OnePak Skin Care System, helps you to turn the simple hand washing ritual into a pleasant experience. These highly versatile skin care systems offer 3 refill options, making it the only skin care system that can be used almost anywhere.

Gentle Cleanser (Pink): General purpose cleanser

- pH balanced with pleasant floral fragrance.
- Specially formulated to clean, soften and moisten skin.

Recommended Areas of Use: office areas, public facilities, office building, schools and other locations that do not have specialised cleaning tasks.



Gentle Cleanser (Yellow): Hair & Body Shampoo

- Luxurious lather and rich in emollients. No soap residue to dry the skin.
- Protein rich, clean-rinsing formula is a superior hair shampoo with the soothing kindness of glycerin.

Recommended Areas of Use: long-term healthcare settings, health spas, salons gymnasium, swimming pools, hotel & lodging guestrooms.



Microderm Cleanser (Pearl): Antibacterial Soap

- 0.25% Triclosan to provide low level bacterial reduction.
- To provide light duty germ killing in places like handling facilities and public areas.

Recommended Areas of Use: clinics, hospital and mobile vans.



Product Specification

Code	Description	Fragrance	Unit Size	Colour	CaseCount
01070	WINDOWS® Mini-500 Skin Care Dispenser	-	14cm x 19cm x 9.5cm	Pearl White	10 units
01261	WINDOWS® Series-i OnePak Skin Care Dispenser	-	26.4cm x 25.4cm x 12.1cm	White	12 units
02004	WINDOWS® Series-i Skin Care Dispenser 500 ml	-	12.5cm x 19.2cm x 12.5cm	White	10 units
02005	IN-SIGHT® Series-i Skin Care Dispenser 500 ml	-	12.5cm x 19.2cm x 12.5cm	Black	10 units
02006	IN-SIGHT® Series-i Skin Care Dispenser 800 ml	-	12.5cm x 26.5cm x 12.5cm	Black	12 units
01014	Gentle Lotion Skin Cleanser (Pink)	Light Floral	500ml	Pink	18 pouches
01196	Gentle Lotion Skin Cleanser OnePak (Pink)	Light Floral	800ml	Pink	12 pouches
01107	Cleanser Hair & Body Wash	Citrus Fruity	500ml	Golden Yellow	18 pouches
01131	Antibacterial Skin Cleanser	Medicated	500ml	Pearl White	20 pouches



FOLDED PAPER TOWEL SYSTEM



A System for rapid, effective and hygienic hand drying action

FOLDED PAPER TOWEL SYSTEM

Folded Paper Towel System helps you to give your staff and customers a drying method that keeps them healthy and happy.

IN-SIGHT* Series-i Folded Paper Towel Dispenser



IN-SIGHT* Series-i Folded Paper Dispenser



WINDOWS® Series-i Folded Paper Towel Dispenser



WINDOWS® Series-i Folded Paper Dispenser

Also Available

WINDOWS® Series Folded Paper Towel Dispenser



**WINDOWS® Compact
Folded Towel Dispenser**

For tight and low traffic
washrooms.



**WINDOWS® Folded Towel
Dispenser**

A High capacity paper towel
dispenser for high traffic
washrooms



FOLDED PAPER TOWEL SYSTEM

Dispenser

- Dispensers do not rust & are easy to clean.
- The enclosed design of the dispenser protects the stored, unused folded paper towels from dirt, dust & contamination.



- Unique locking mechanism protects (snap lock) paper towels from abuse & pilferage
- Easy to mount on tiles and walls with screws
- On-At-A-Time dispensing controls usage & wastage

Towels

- Pre-cut, interfolded towels ensures One-At-A-Time dispensing making users use only what is required, eliminating
- Top-up' ability enables the staff to refill the towels as and when required saving maintenance time and cost.
- The user touches only the towel he/ she uses, eliminating cross-contamination and ensuring complete hygiene.
- Super soft towels provide user satisfaction.
- Each towel is of consistent size & quality.

C-Fold Towels

- Large sheet with simple embossing pattern.
- Superior quality makes the towels highly absorbent, the towels wipe, clean and dry without shredding or sticking to the skin.

DIFFERENT FOLDED PAPER TOWELS

Multi-Fold Towels

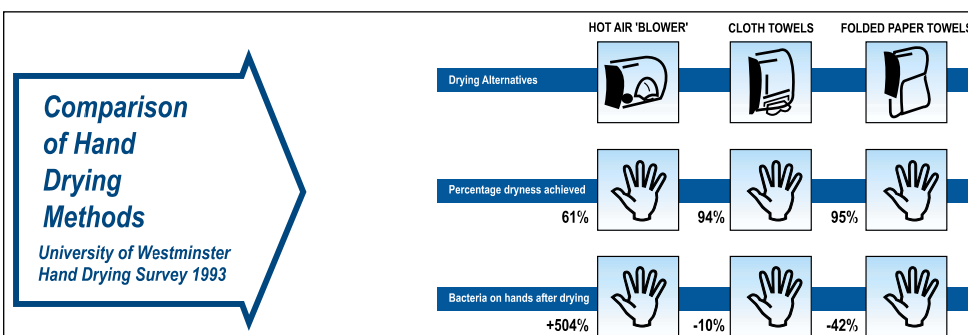
- The multi-fold towels enables One-At-A-Time dispensing which ensures controlled usage & wastage as the towels dispensed are completely open, making the entire towel surface available for hand wipe.
- Smaller sheet size just right for one hand wipe.
- Distinct, simple embossing pattern increases surface area, while remaining soft, leading to better absorption & control usage.
- No incorrect way of loading and easy to refill.



Recommended Areas of Use

- Hospitals / Healthcare, Schools, Offices, Hotels & Motels, Multiplexes, Nursing Homes / Clinics, Airports, Shopping Centre, Bus / Rail Stations, Restaurants, Pubs / Clubs.

Research on hand-drying options



Product Specification

Code	Description	Unit Size	Packing	SheetCount	Colour	Case Count
01010	WINDOWS® TowelDispenser	27.5cm x 40cm x 11.5cm	1	-	Pearl White	4
01132	WINDOWS® CompactTowelDispenser	27cm x 19cm x 11.5cm	1	-	Pearl White	10
02002	INSIGHT* Series-i Folded Paper Towel Dispenser	31cm x 36cm x 14.2cm	1		Smoke Grey	6
02010	WINDOW® Series-i Folded Paper Towel Dispenser	31cm x 36cm x 14.2cm	1		WHITE	6
01011	KLEENEX® C-Fold Towel	21cm x 33cm	1	150 Towels	White	20
01012	SCOTT® Natural C-Fold Towel	21cm x 33cm	1	150 Towels	Brown	20
01150	SCOTT® White C-Fold Towel	21cm x 33cm	1	150 Towels	White	20
01221	KLEENEX® Multi-Fold Towel	21cm x 25cm	1	125 Towels	White	24
01222	SCOTT® White Multi-Fold Towel	21cm x 25cm	1	125 Towels	White	24
01224	SCOTT® Natural Multi-Fold Towel	21cm x 25cm	1	125 Towels	Brown	24
01208	SCOTT® SCOTTFOLD M Towels	20.57cm x 31.49cm	1	175 Towels	White	20
02150	KIMSOFT* White C-Fold Towels	22cm x 32cm	1	150 Towels	White	20
02012	KIMSOFT* Natural C-Fold Towels	22cm x 32cm	1	150 Towels	Brown	20

HARD ROLL TOWEL DISPENSER

Dispenser

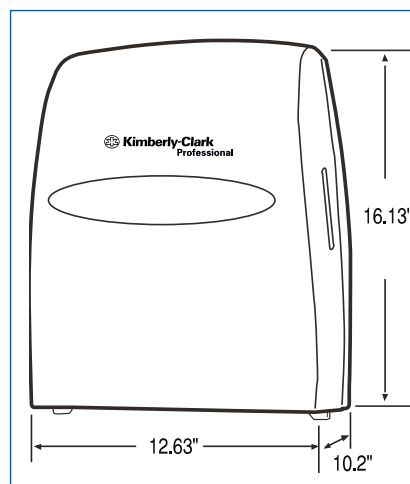


INSIGHT* Series-i Hard Roll Towel Dispensers



WINDOWS® Series-i Hard Roll Towel Dispensers

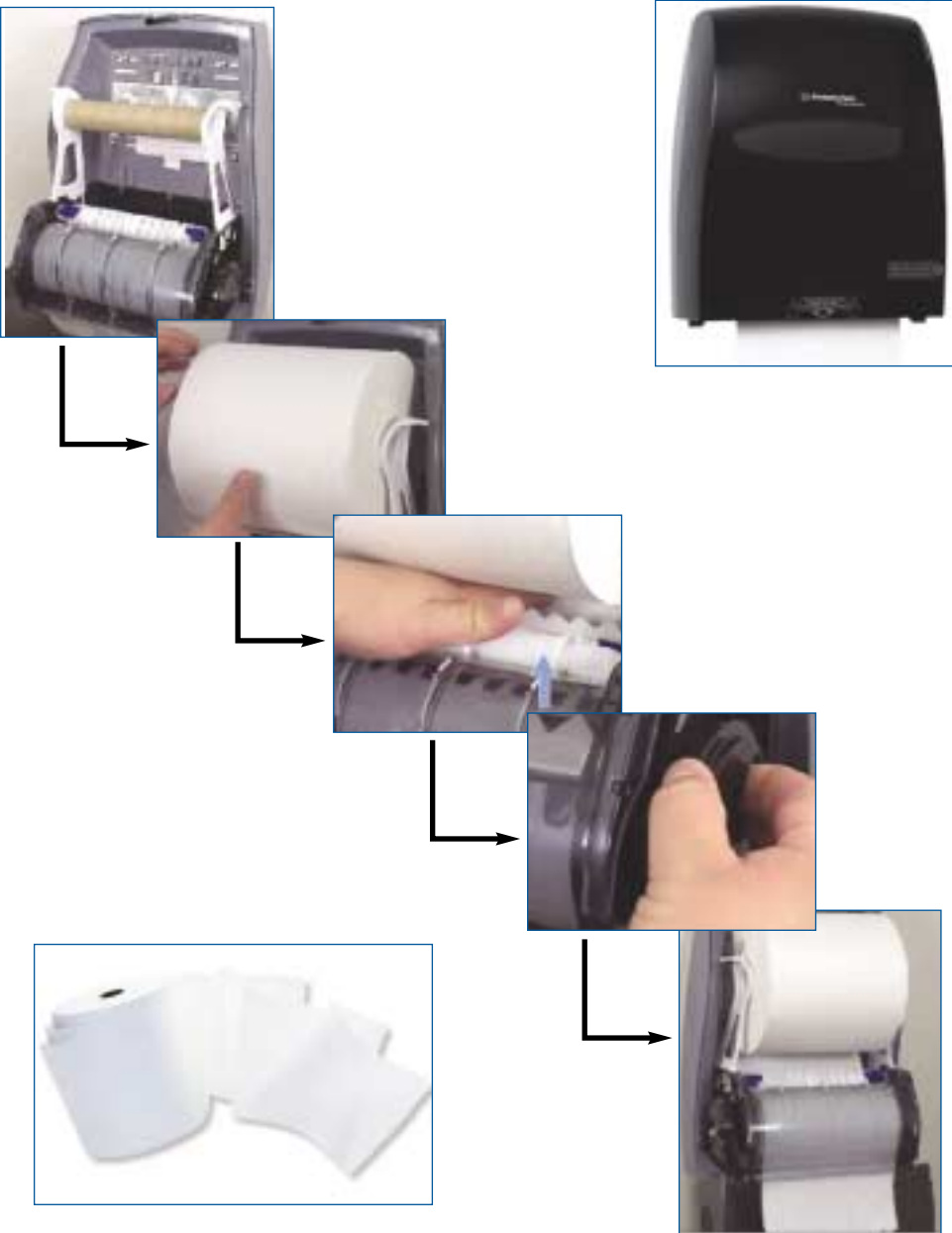
Features



- Made of high-impact plastic with a white housing that includes a provision for a custom deco strip.
- Dispenser automatically advances and cuts a nominal 12" of towel when activated by pulling exposed towel
- No-touch dispensing system helps minimize the spread of dirt and germs.
- Features include emergency feed knob and choice of key-activated spring lock or push button operation

HARD ROLL TOWEL DISPENSER

Loading Instructions



Product Specification

Code	Description	Colour	Sheet Size	Case Count
02008	INSIGHT* Series-i HRT Dispensers	Black	32.2 cm x41.8 cm x 25.8 cm	1
02008	WINDOWS® Series-i HRT Dispensers	White	32.2 cm x41.8 cm x 25.8 cm	1

HYGINIC BATHROOM TISSUE (HBT) SYSTEM



An innovative system with
pre-cut sheets for One-At-A-Time dispensing

WINDOWS® Hygienic Bathroom Tissue System

HBT System helps you to provide your clients and your employees a germ free neat looking and soft premium tissue they will love.

Dispenser

- Tough, vandal resistant ABS dispenser ensures long life and durability.
- Dispensers do not rust & are easy to clean.
- The enclosed design of the dispenser protects the stored, unused bathroom tissues from dirt, dust & contamination.
- Unique locking mechanism (snap lock) protects bathroom tissues from abuse & pilferage.
- Pre-cut sheets enable One-At-A-Time dispensing.



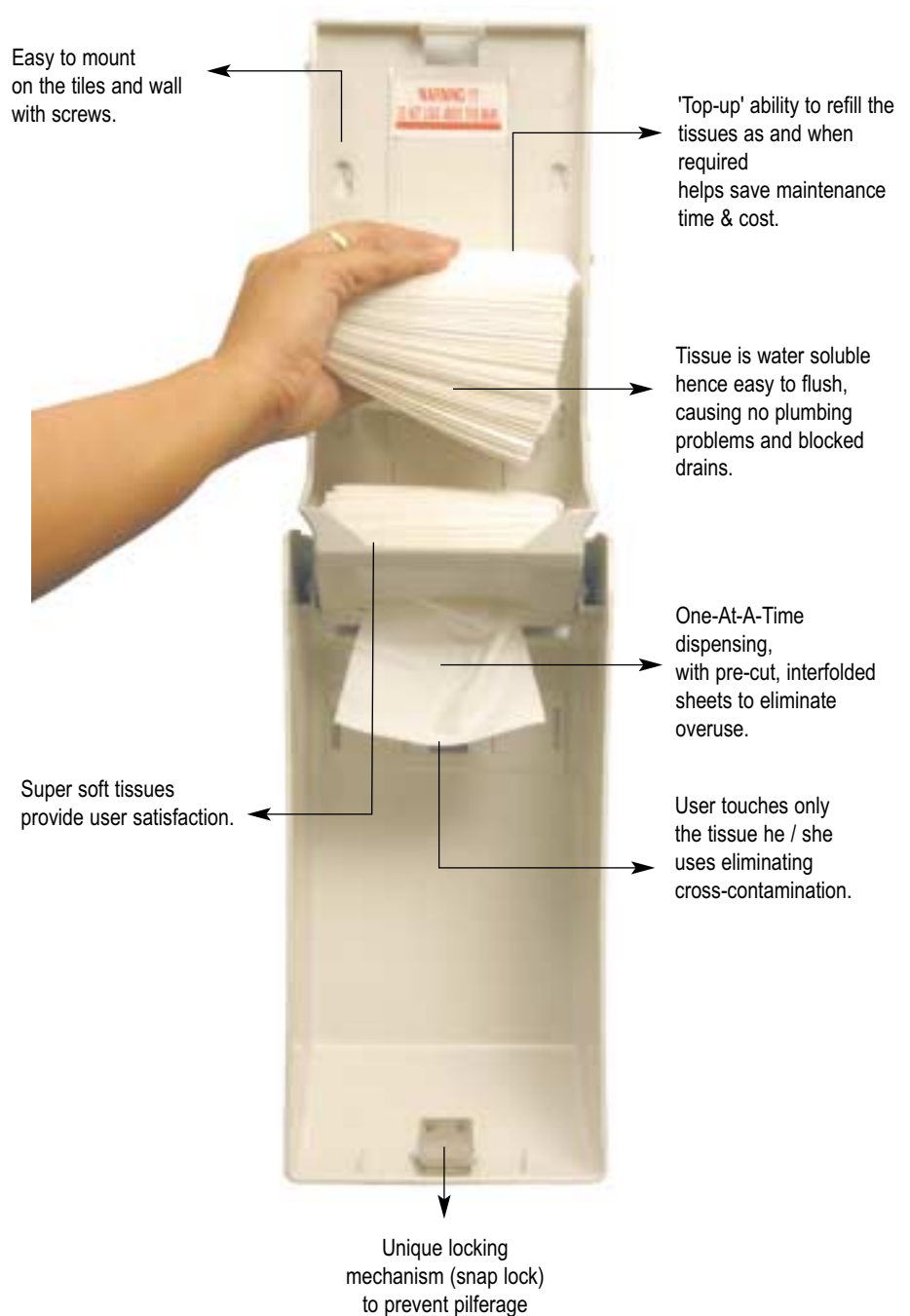
Internationally acclaimed 'WINDOWS' feature enables the staff to monitor refill levels at-a-glance.



Distinctive 'Deco-Strip' feature allows you to customise the sleek and attractive dispenser according to your washroom décor.

WINDOWS® Hygienic Bathroom Tissue System

Hygienic Bathroom Tissue System



WINDOWS® Hygienic Bathroom Tissue System

Available in two sizes

WINDOWS® HBT (Standard) Dispenser



A High capacity dispenser for high traffic washrooms

WINDOWS® HBT (Compact) Dispenser



A High capacity dispenser for high traffic washrooms

Recommended Areas of Use

- Hospitals / Healthcare, Schools, Multiplexes, Offices, Airports, Hotel & Motels, Shopping Centres, Bus / Rail Stations, Nursing Homes / Clinics, Restaurants and Pubs / Clubs.

Product Specification

Code	Description	Unit Size	Ply	Packing	Colour	Case Count
01226	WINDOWS® HBT (Standard) Dispenser	15cm x 31cm x 12cm	-	1	Pearl White	10
01227	WINDOWS® Compact HBT Dispenser	13.2cm x 13cm x 11cm	-	1	Pearl White	24
01230	KIMSOFIT* Hygienic Bathroom Tissue	10.5cm x 21cm	1 - ply	250 Pulls	White	100
01232	KIMSOFIT* Compact Hygienic Bathroom Tissue	10.5cm x 21cm	1 - ply	150 Pulls	White	150
01268	SCOTT® Hygienic Bathroom Tissue	10.5cm x 21cm	2- ply	125 Pulls	White	100
01269	SCOTT® Compact Hygienic Bathroom Tissue	10.5cm x 21cm	2 - ply	75 Pulls	White	150



PERSONAL SEAT COVER SYSTEM



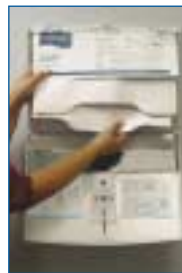
A system that helps you give each of your guests, clients and employees a fresh, clean, sanitised and germ-free toilet seat, each time they use the washroom

PERSONAL SEAT COVER SYSTEM

Personal Seat Cover System gives you that extra edge over competition, to show that you care.

Features

- The enclosed design of the dispenser protects the stored, unused seat cover from dirt, dust & contamination.
- Specially designed simple lever mechanism helps to dispense one seat cover at a time, minimising wastage.
- Unique locking mechanism (snap lock) protects the unused seat cover from tampering, abuse & pilferage.
- Easy to replace the refills.
- Distinctive 'Deco-Strip' feature allows you to customise the dispenser according to your washroom décor.



Refill

- The user touches only the seat cover he/ she uses, eliminating cross-contamination.
- Designed to fit on the toilet seat and provide greater user protection from contaminants, germs and harmful bacteria.
- The used seat cover is pulled down into the toilet bowl automatically on flushing, providing hygienic and convenient disposal.



Recommended

- Hospitals / Healthcare, Schools, Multiplexes, Offices, Airports, Hotels & Motels, Shopping Centre, Bus / Rail Stations,
- Nursing Homes / Clinics, Restaurants & Pubs / Clubs.

Product Specification

Code	Description	Unit Size	Packing	Colour	Case Count
02003	IN-SIGHT* Series-i Personal Seat Cover Dispenser	33.5cm x 44.4cm x 8.2cm	1	Smoke	1
01260	WINDOWS® Series - i Personal Seat Cover Dispenser	33.5cm x 44.4cm x 8.6cm	1	White	1
01057	SCOTT® Personal Seat Cover	44cm x 37.5cm	100 sheets per pad	White Grey	20 pads



JUMBO ROLL TISSUE (JRT) SYSTEM



Make these Twenty Changes

OR

JUST ONE



The Best Low Maintenance, High Traffic Solutions

JUMBO ROLL TISSUE (JRT) SYSTEM

JRT System solves your problems of constant 'Run-Outs' and high volume 'Stub-Roll' wastage.

Dispenser

- Tough, vandal resistant ABS dispenser ensures long life and durability.
- The enclosed design of the dispenser protects the stored, unused bathroom tissues from dirt, dust & contamination.
- Unique locking mechanism (snap lock) protects bathroom tissues from abuse & pilferage.
- Serrated edges on the dispenser ensure smooth, single hand dispensing.



Refill

- One jumbo roll is equivalent to 22 standard rolls, reducing maintenance me, cost & 'Run-Outs'.
- Superior quality tissue disintegrates on contact with water ensuring easy flushing, causing no plumbing problems or blocked drains.
- Super soft tissues provide user satisfaction.

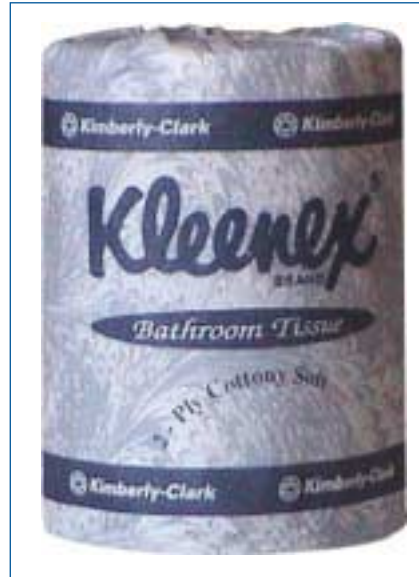


Product Specification

Code	Description	Unit Size	Ply	Packing	Colour	Case Count
01307	WINDOWS® Series-i Jumbo RollTissue Dispenser	27.1cm x 27.6cm x 33.9cm	-	1	White	8
02001	IN-SIGHT* Series-i Jumbo RollTissue Dispenser	27.1cm x 27.6cm x 13.9cm	2-Ply	1	Smoke	8
01128	SCOTT® Jumbo Roll Tissue	300 meters	2-Ply	1	White	8
01164	KIMSOF* Jumbo Roll Tissue	225 meters	2-Ply	1	White Grey	8



SMALL ROLL TISSUE



The Best Low Maintenance, High Traffic Solutions

Kimberly-Clark Professional* **Small Roll Tissue**

With Kleenex® softness, strength and absorbency go hand in hand.

- 12-ply tissues with luxurious finish have the right balance of strength, absorbency and economy.
- Super soft tissues provide user satisfaction.
- The superior quality tissues disintegrates on contact with water ensuring easy flushing, causing no plumbing problems or clogged drains.
- Simple embossing pattern gives a unique fluffiness to the tissues.
- Each bathroom roll is Individually wrapped for cleanliness and hygiene.
- Bathroom rolls are packed in various sheet counts with the larger rolls offering extra savings in maintenance.
- Uniform and even perforations.

Standard Small Roll Tissue

Standard Small Roll come with cost and image problems, which can be a matter of concern to you..

- Larger sheet sizes, uneven perforations and low absorptive capacity makes the user use more paper than required.
- Standard bathroom rolls do not disperse in water, leading to clogged and blocked drains.
- Loose winding, uneven cuts and ragged edges make standard bathroom rolls look shabby and untidy.

FACIAL TISSUE



The Names That Say It All



Kimberly-Clark* Facial Tissue

Nothing says "Quality" better.

- Super soft and smooth tissues are gentle on the skin.
- Tissues are extra-absorbent and strong hence wipe thoroughly.
- The tissues do not shred and stick to skin eliminating overuse & frustration.
- Convenient, One-At-A-Time, continuous dispensing reduces wastage.
- Unique poly-sheet inside the box protects the tissues against dust.
- Tissues are of consistent sheet size and quality.

Standard Facial Tissue

Standard Small Roll come with cost and image problems, which can be a matter of concern to you..

- Poor wet strength causes tissues to shred and stick to the skin leading to wastage and frustration.
- Small sheet size makes the user use more number of tissues than actually needed.

Product Specification

Code	Description	Unit Size	Ply	Packing	Case Count
01033	KLEENEX® Facial Tissue (Flat Box)	21cm x 21cm	2 - Ply	100 sheets	60
01120	SCOTT® Facial Tissue (Flat Box)	16cm x 21cm	2 - Ply	100 sheets	60
01282	KLEENEX® Facial Tissue (Cube Box)	21cm x 21cm	2 - Ply	80 sheets	60
01175	KIMSOFT® Facial Tissues	21cm x 21cm	2 - Ply	80 sheets	60

KIMBERLY-CLARK* UTILITY KITCHEN ROLL



NO MESS, NO FUSS !!

KIMBERLY-CLARK* UTILITY KITCHEN ROLL

With Utility Kitchen Roll spills, crumbs, cross-contamination is all over!!

Dispenser

- Tough and durable dispenser with protective coating to prevent rust formation.
- Serrated blades for smooth single hand dispensing.



Refill

- Wiper is highly absorbent, thus controls usage and reduces wastage.
- One time use and throw wipers, eliminates cross-contamination.
- Wipers have low lint hence do not leave particles behind.
- Each kitchen roll is equivalent to over 20 standard kitchen rolls, reducing refill & maintenance time.



Product Specification

Code	Description	Packing	Unit Size	Colour	Case Count
01055	Kimberly-Clark Professional* Utility Roll Wall Mounted Stand	1	44cm x 23.5cm x 28.5cm	KC Blue	1
01292	Kimberly-Clark Professional* Utility Roll Floor Stand	1	43cm x 117cm x 64cm	KC Blue	1
01015	KLEENEX Utility Roll	-	9.5" x 300meters	White	4
01121	SCOTT Utility Roll	-	9.5" x 300meters	Brown	4
01304	SCOTT Small Roll Towel	1	20cm x 20cm	White	50
01329	SCOTT Utility Kitchen Roll	1	22cm x 300meters	White	4



POP-UP NAPKIN SYSTEM



This unique system with One-At-A-Time dispensing for 'Superior Performance & Better Cost-In-Use'

With Utility Kitchen Roll spills, crumbs, cross-contamination is all over!!

Kimberly-Clark Professional* Pop-Up NapkinDispenser

- Tough and durable dispenser with protective coating to prevent rust formation.
- Serrated blades for smooth single hand dispensing.



Pop-up Napkin System

Conventional Practices



- Napkins are not in an enclosed dispenser hence are subject to pilferage.
- Napkins are exposed to dirt, dust and contamination.
- Conventional methods do not provide One-At-A-Time dispensing, which helps to control usage and wastage.
- Cloth napkins get shabby and stained after few uses.
- Cloth napkin if not washed properly can lead to cross-contamination.
- Precious time is spent on carting, laundering and sorting of cloth napkins.

Kimberly-Clark Professional* Pop-up Napkin System

A revolutionary dispenser and refill napkin system which is highly cost effective and saves time.

- High quality plastic dispenser stand upto use & abuse.



- The enclosed design of dispenser protects the stored, unused paper napkin from dust, dirt and contamination.
- One-At-A-Time dispensing system ensures users use only what is required, eliminating wastage.
- Smart, sleek dispensers available in pastel colours fit all decors.

Refill

- Pre-cut, interfolded sheets ensures One-At-A-Time dispensing which controls excessive usage & wastage.
- The user touches only the paper napkin he/she uses eliminating cross-contamination & ensuring complete hygiene.
- Easy to refill and 'top-up' as there is no incorrect way of loading the pack in the dispenser, ensuring convenience & saving maintenance time
- Simple embossing pattern gives a unique fluffiness to the napkins.
- Super soft napkins provide user satisfaction.

Recommended Areas of Use

- Restaurants, Tea & Coffee bars, Office Canteens, Pubs, Ice Cream parlours.

Product Specification

Code	Description	Unit Size	Ply	Packing	Case Count
01225	Kimberly-Clark Professional* Pop-Up Napkin Dispenser	12cm x 6.8cm x 12cm	-	1	Pearl White
01234	KIMSOF* Pop-Up Napkin	10.5cm x 21cm	1-Ply	150 Pulls	White



QUARTER FOLD NAPKINS



Kimberly-Clark Professional* **Quarter Fold Napkins**

Premium softness & cleanliness your customers deserve

- Superior quality makes the napkins highly absorbent prevents the napkin from shredding or sticking to the skin thus eliminating wastage & frustration.
- Simple embossing pattern gives a unique fluffiness to the napkin.
- Super soft and smooth napkin is gentle on the skin. Premium softness & cleanliness your customers deserve.

Standard Small Roll Tissue

Conventional napkin can never give you the softness or cleanliness you wish to give your customers.

- Conventional paper napkins shred and stick to skin.
- Conventional paper napkins do not absorb and feel rough on the skin.
- Cloth napkins get shabby and stained after few uses.
- Cloth napkin if not washed properly can lead to cross-contamination.
- Precious time is spent on carting, laundering and sorting of cloth napkins.

WINDOWS® MICROMIST 3000

Odour Control System with programming options to keep the unit operating 8, 12, 16, 24 hours a day.

More of what you want :

- 1 Clean Fresh Fragrance
- 1 Compact Discreet Size

Less of what you don't want :

- 1 Propellant
- 1 CFC's (Chlorofluorocarbon)
- 1 Bulky Size

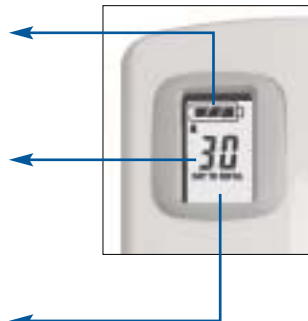
The only Proactive Display :

Provides advance notice for refill & battery change

Battery indicator : Displays when batteries will need replacing, long **before** they actually expire (upto 24 months).

Days to fragrance refill indicator : Displays how many days remain **before** the refill needs changing. **No guesswork!**

Battery indicator : Displays when batteries will need replacing, long **before** they actually expire (upto 24 months).



Fragrances for your select from are :



**Fresh
Linen**



**Forest
Dew**



**Spring
Breeze**

WINDOWS[®] MICROMIST 3000

Features :

Benefits

- | | |
|---|--|
| <ul style="list-style-type: none"> ¹ Flexible programming options | <ul style="list-style-type: none"> - Can be customised to operate 8, 12, 16 or 24 hrs a day |
| <ul style="list-style-type: none"> ¹ Realtime 24hr clock | <ul style="list-style-type: none"> - Can be programmed to operate over 5, 6 or 7 days, thereby controlling and reducing refill costs. |
| <ul style="list-style-type: none"> ¹ LCD display for <ul style="list-style-type: none"> - Battery indicator - Alarm symbol - Fragrance refill indicator | <ul style="list-style-type: none"> - Indicates when battery needs replacing - Audio alarm option to cue / indicate when either battery or refill needs replacing - Shows how many days remain before refill needs changing |
| <ul style="list-style-type: none"> ¹ Compact Dispenser | <ul style="list-style-type: none"> - Dispenser is compact and discreet |
| <ul style="list-style-type: none"> ¹ Microtron™ Technology | <ul style="list-style-type: none"> - Microtron™ are micro molecules which penetrate and break down the structure of large malodors into small molecules of a neutral base, allowing fragrance to permeate the room - MicroMist micro molecules float longer and have the longest lasting fragrance |
| <ul style="list-style-type: none"> ¹ Ethanol Solvent | <ul style="list-style-type: none"> - Ethanol is the safest ingredient that can be used for aerosols - Unlike methanol solvents, this ingredient is not a fatal poison and will guard your safety & health |

WINDOWS® MICROMIST 3000

MicroMist Technology at work :



Action : "Micro molecules" float significantly longer
Result : Longest-lasting fragrance neutralising odour



Action : "Micro molecules" disperse better with air flow
Result : More coverage for fragrance & odour neutralisers



Action : "Proprietary Microtrans" odour neutralisers attack and neutralise unpleasant & unavoidable odours
Result : The washroom is odour free!



Action : The long-lasting MicroMist results in :
Eliminating Malodors from your restroom, leaving it smelling clean & fresh
Result : A clean fresh fragrance creates an image of hygiene

Product Specification

Code	Description	Fragrance	Content	Case Count
01284	WINDOW* Micromist 3000 Dispenser	-	-	06
01285	Fresh Linen Air Neutraliser	Citrus Preference Zone	75 ml	12
01286	Spring Breeze Air Neutraliser	Earth Preference Zone	75 ml	12
01287	Forest Dew Air Neutraliser	Forest Preference Zone	75 ml	12

ABOUT US

Guaranteed Value. Proven Performance. Trusted Names.

- *Since 1872, has been known for quality, service and fair dealing wherever we do business.*
- *We are a company that creates quality products, born out of continual innovation and technology leadership in fibres, nonwovens and absorbency.*
- *A company focused on leadership in three global core businesses: Personal Care Products, Consumer Tissue Products and Business-to-Business Products.*
- *The world's leading tissue manufacturer and the second largest Personal Care Product company in the United States.*
- *The tissue, personal care and health care products are manufactured in 42 countries and sold in more than 150 countries.*
- *A FORTUNE 500 company with US\$14 billion in sales.*
- *Nearly one-quarter of the worlds population use Kimberly-Clark products each year.*
- *Every day one in four people around the world trust our brands to enhance their health and well being.*
- *Named Fortune's 100 Best Companies to work for in America.*
- *Recognised, trusted and valued by customers across the globe for its premium quality and superior performance brands like KLEENEX, WYPALL, SCOTT, KOTEX & HUGGIES.*
- *We are a family of 64,000 people worldwide, who trust and respect one another and are motivated to continually deliver superior products and exceed the expectations of our shareholders, our customers and ourselves.*

Give us a call on our Toll-Free Customer Care Line: 1800-233-8888

#Accessible from MTNL and BSNL lines only.

 **Kimberly-Clark**
Professional*

Better ideas working for you. Worldwide. World Class.

Kimberly-Clark Hygiene Products Private Limited
Survey No. 279, Raison Industrial Park,
Village - Mann, Taluke - Mulshi,
Dist. - Pune - 411 057, India.
Tel: +91-20-22939121-24
Fax: +91-20-22939118
E-mail: marketing.india@kcc.com
Website: www.kcprofessional.com

Distributed by :

*Trademarks of Kimberly-Clark Worldwide, Inc. Registered Trademarks of Kimberly-Clark Worldwide, Inc. ©2003, KCWW, Inc. All Rights Reserved.